

## HOTEL - FACT SHEET 2019

The Hotel & Surrounds Pg1 | Weather Pg2 | Architectural Layouts Pg3 | Reference Table Pg4

More Quarters Hotel | Tel: +27 (0)21 487 5660 | Email: [res@morequarters.co.za](mailto:res@morequarters.co.za)  
Head Office/Reservations | Tel: +27 (0)11 880 9992 | Email: [res@more.co.za](mailto:res@more.co.za) | Website: [www.morequarters.co.za](http://www.morequarters.co.za)  
**[www.more.co.za](http://www.more.co.za)**

### Unique Selling Points

Popular with family, solo, and business travellers alike • Part of the family-owned and -managed MORE collection of lodges and hotels

- A variety of restaurants, bars, and boutiques within walking distance
- Close to some of Cape Town's biggest attractions, including: Table Mountain Aerial Cableway (10 minutes); Victoria & Alfred Waterfront (10 minutes); Camps Bay (10 minutes); The Company's Garden (5 minutes)
- Complimentary daily-scheduled transfers within a 6km (4mi) radius of the hotel

### About the Hotel

Luxury rooms, including family rooms, come with all the privacy of guests' own lounges, kitchens and dining areas, and all the convenience of five-star hotel service. The hotel's 23 accommodations are ideal for travellers who appreciate having their own spot to come home to, where they can kick off their shoes and play their favourite music after a busy day out. The hotel also includes the four-bedroom Redcliffe House and we invite guest families and friends to experience it as their own.

### Families

Children of all ages are welcome at More Quarters Hotel • The accommodations - ranging from Luxury Rooms (three sets interleading) and Family Rooms (each with two en-suite bedrooms), to the private Redcliffe House - provide homes away from home for families of all sizes • Amenities, like cots and highchairs, are available to further accommodate younger guests • A childminding service is offered to keep children amused and out of mischief, while parents take some me time

### Mack & Madi Experience

Inspired by Rob and Britt More's first-hand understanding of travelling with their twins, Mack and Madi. More options and flexibility around accommodations, meals, and outings give children a little extra freedom to explore and just be kids - and make family travel child's play.

In-room kids' amenities include special dressing gowns for boys and girls, and age-appropriate books and toy boxes (filled with everything from colouring books to building blocks) to ensure young ones settle in easily and are kept entertained. When wanting to explore the city together, MORE Reservations will gladly assist with organising fun-filled family outings at guests' convenience. Families are not restricted by itineraries and can arrange their stays around exactly what they feel like doing.

### Location

**More Quarters Hotel:** is situated in the Cape Town suburb of Gardens, one of the city's oldest and most sophisticated neighbourhoods, just outside of the main hustle and bustle.

**GPS co-ordinates:** 33°55'56.14"S | 18°24'29.18"E

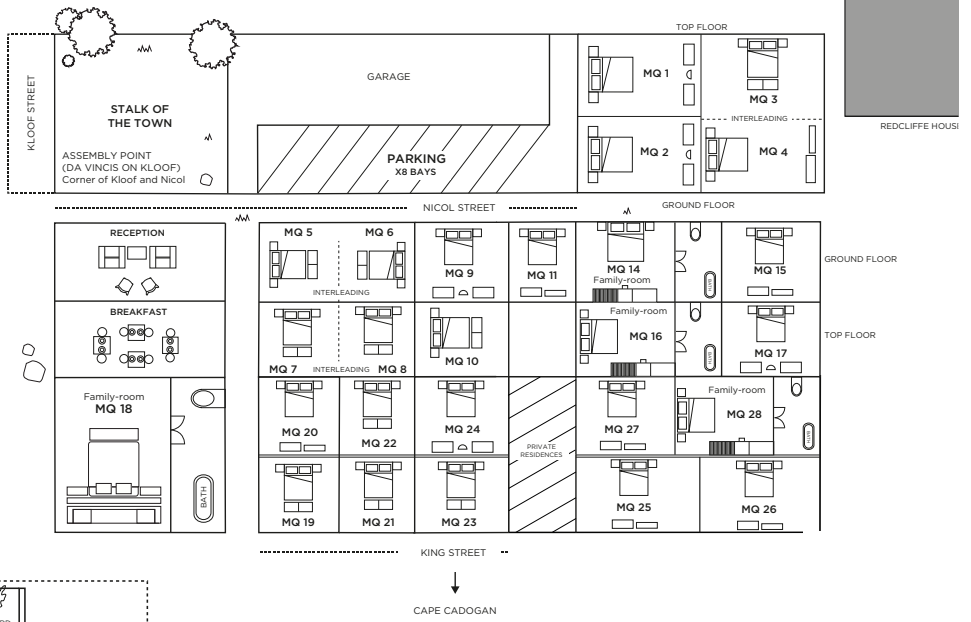
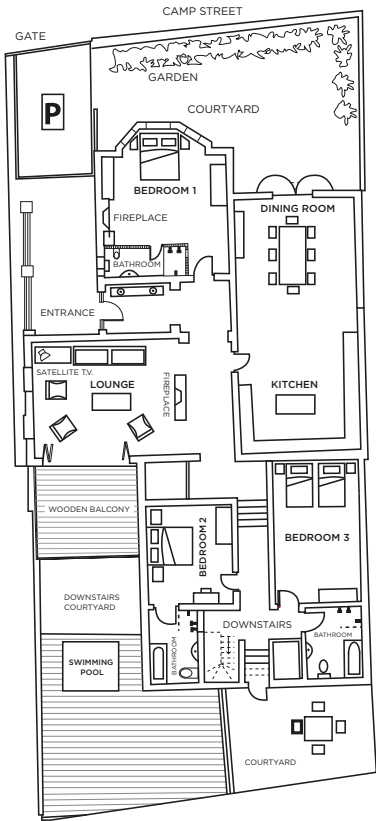
## **Weather**

Cape Town has a Mediterranean climate, with warm, dry summers and cool, wet winters • The average maximum temperatures range from 18°C/64°F in July to 27°C/81°F in January, with the lowest average minimum occurring in July at 7°C/45°F • The average annual rainfall is 788mm (31in), most of which falls between May and August • Cape Town experiences in excess of 250 days of sunshine per year • Cape Town can go through 'four seasons in a day', so it is advisable for visitors to keep a light windbreaker with them, especially if visiting during spring or autumn

## **Best Time to Travel**

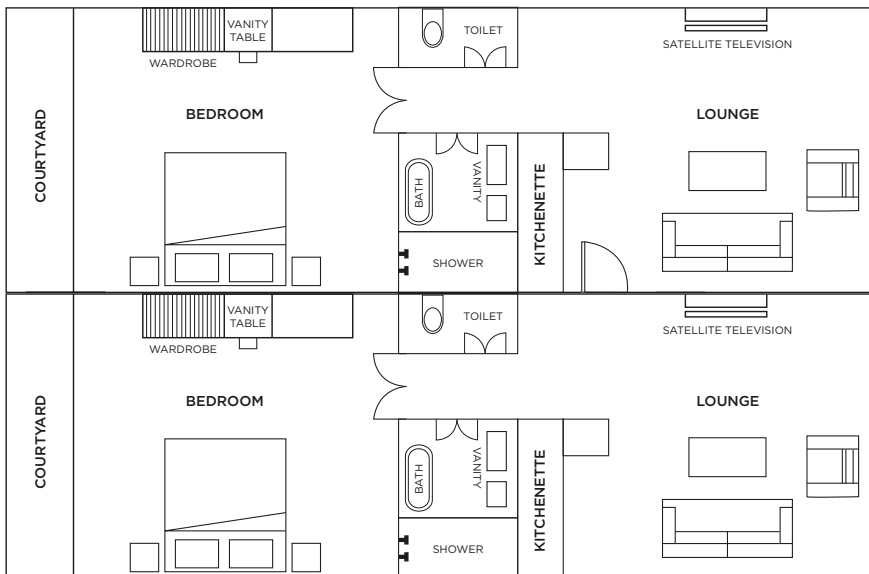
Cape Town is a year-round destination, depending on the focus of guests' holidays • September is the beginning of spring and the whale-watching season • December to March is the hottest time of the year, and an ideal time to visit, especially for beachgoers • For thrill seekers, the Autumn and Winter months (May to the end of August) provide the ideal conditions for shark-cage diving; the Cape Winelands are also at their most lush at this time of year

# Redcliffe House Layout

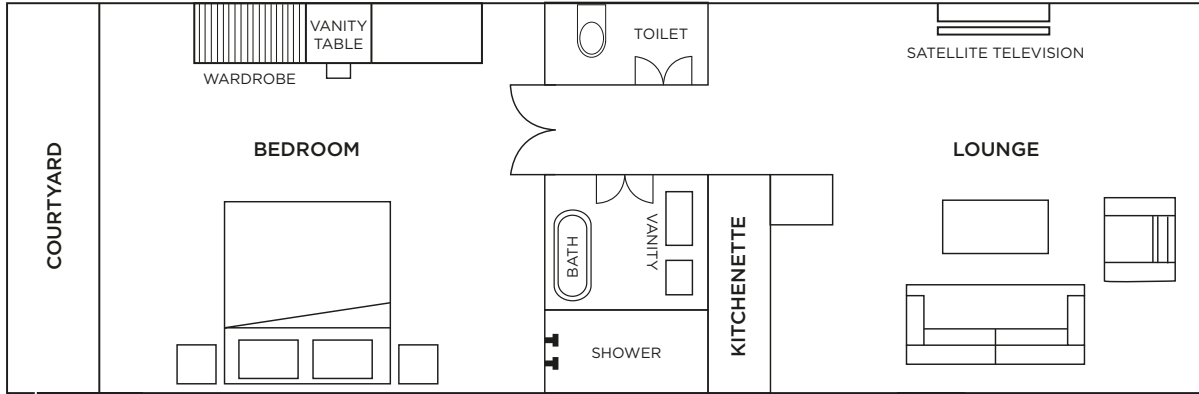


# More Quarters Hotel Layout

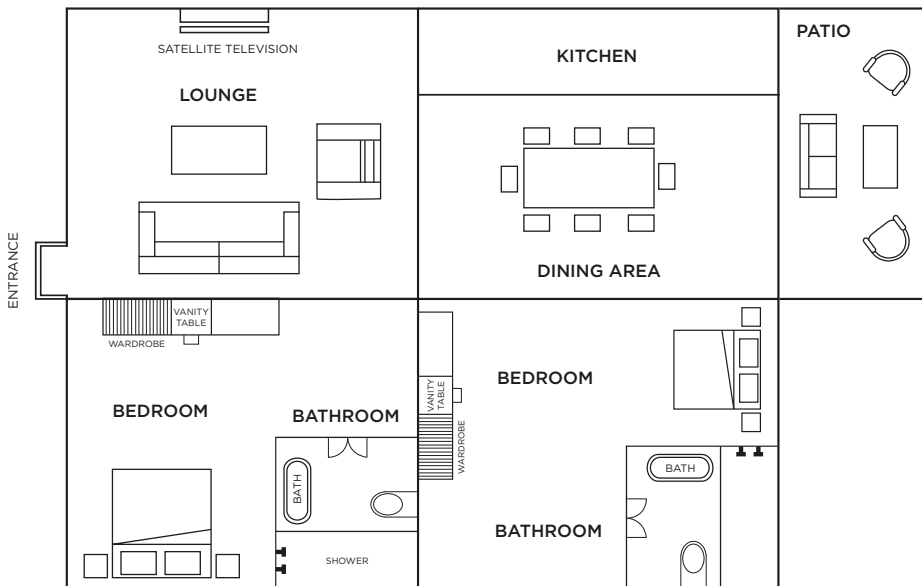
# More Quarters Hotel Interleading Luxury Room Layout



**More Quarters Hotel  
Luxury Room Layout**



**More Quarters Hotel  
Family Room Layout**



## Reference Table - More Quarters Hotel, Including Redcliffe House

Reference	Luxury Room	Family Room	Redcliffe House
Accommodation	19 Luxury Rooms (x3 sets interleading)	3 Family Rooms	1 four-bedroom house
Size of apartment (average)	65m <sup>2</sup> /700ft <sup>2</sup>	85m <sup>2</sup> /915ft <sup>2</sup>	240m <sup>2</sup> /2 580ft <sup>2</sup>
Guests	42	12	8
Children	Yes (all ages)	Yes (all ages)	Yes (all ages)
Baby cots	Yes	Yes	Yes
Childminding	Yes (additional cost)	Yes (additional cost)	Yes (additional cost)
Triple rooms (sleeper couch)	Yes (x3 rooms)	Yes (x1 room)	No
Single traveller supplement	Yes (50% supplement)	Yes (50% supplement)	Yes (50% supplement)
Double bed, convertible to twin	Yes	Yes	Yes
Central guest pool	No	No	No
Private plunge pool	No	No	Yes
Air conditioning	Yes	Yes	Yes
Fireplace	Yes (guest areas)	Yes (guest areas)	Yes
Shower	Yes	Yes	Yes
Free Wi-Fi	Yes (all areas)	Yes (all areas)	Yes (all areas)
Satellite television	Yes	Yes	Yes
In-room safe	Yes	Yes	Yes
Minibar	Yes	Yes	Yes
In-room telephone	Yes (direct dial)	Yes (direct dial)	Yes (direct dial)
Hairdryers	Yes	Yes	Yes
Laundry	Yes (additional cost)		
Conference facilities	No dedicated room		
Disabled guests	Regrettably, the hotel is not suitable for disabled guests		
Parking (street)	Yes	Yes	Yes
Parking (secure)	Yes (additional cost)	Yes (additional cost)	Yes (additional cost)
Hotel restaurant (breakfast)	07h00 - 10h30	07h00 - 10h30	07h00 - 10h30
Room service (lunch and dinner)	13h00 - 21h00	13h00 - 21h00	13h00 - 21h00
Restaurants within walking distance	Yes (numerous)	Yes (numerous)	Yes (numerous)
Gratuities recommendation	ZAR150 per guest per day (pooled and equally shared between the hotel staff)		
Kosher dining	Yes (with prior notice, at an additional cost)		
Closest airport	Cape Town International Airport (30 minutes away)		
Airport transfers	Yes (additional cost)		
Tours and excursions	Yes (additional cost)		
Car rental	Yes (additional cost)		
Free transfers within 6km/4mi radius	Yes	Yes	Yes
Gym Zone Fitness on Kloof St.	Access available at a per-day rate		
Power	220V AC	220V AC	220V AC
Credit cards	Visa, MC, Diners, Amex	Visa, MC, Diners, Amex	Visa, MC, Diners, Amex
Cheques	Not accepted	Not accepted	Not accepted